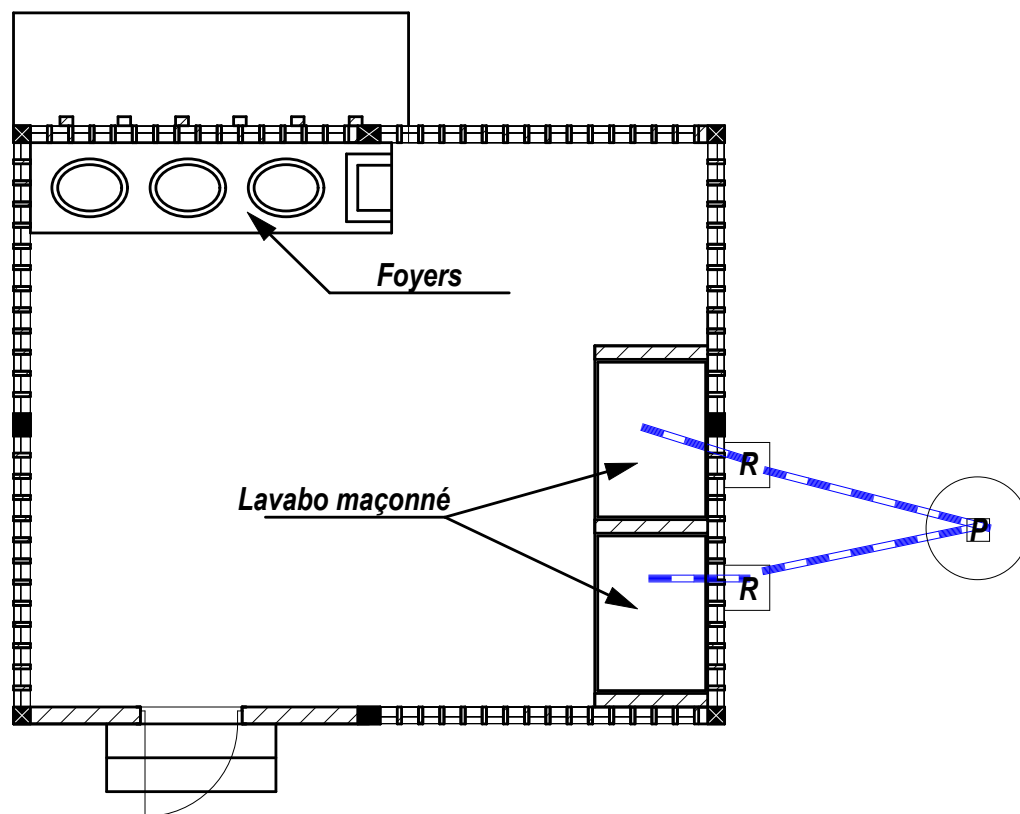
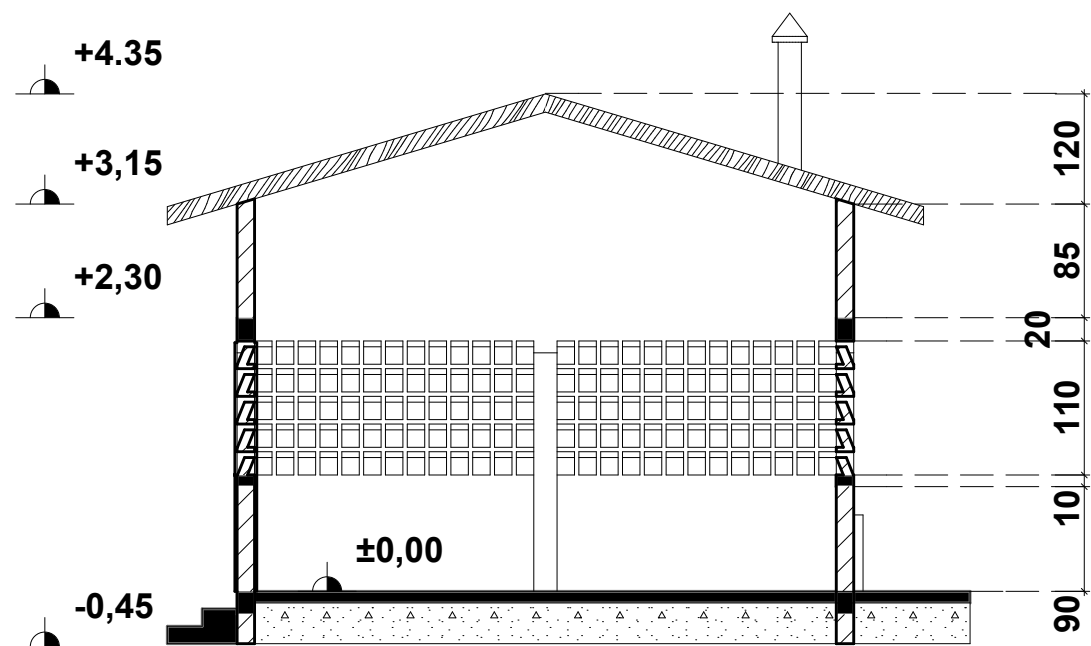


PLAN COTE



PLAN DE PLOMBERIE

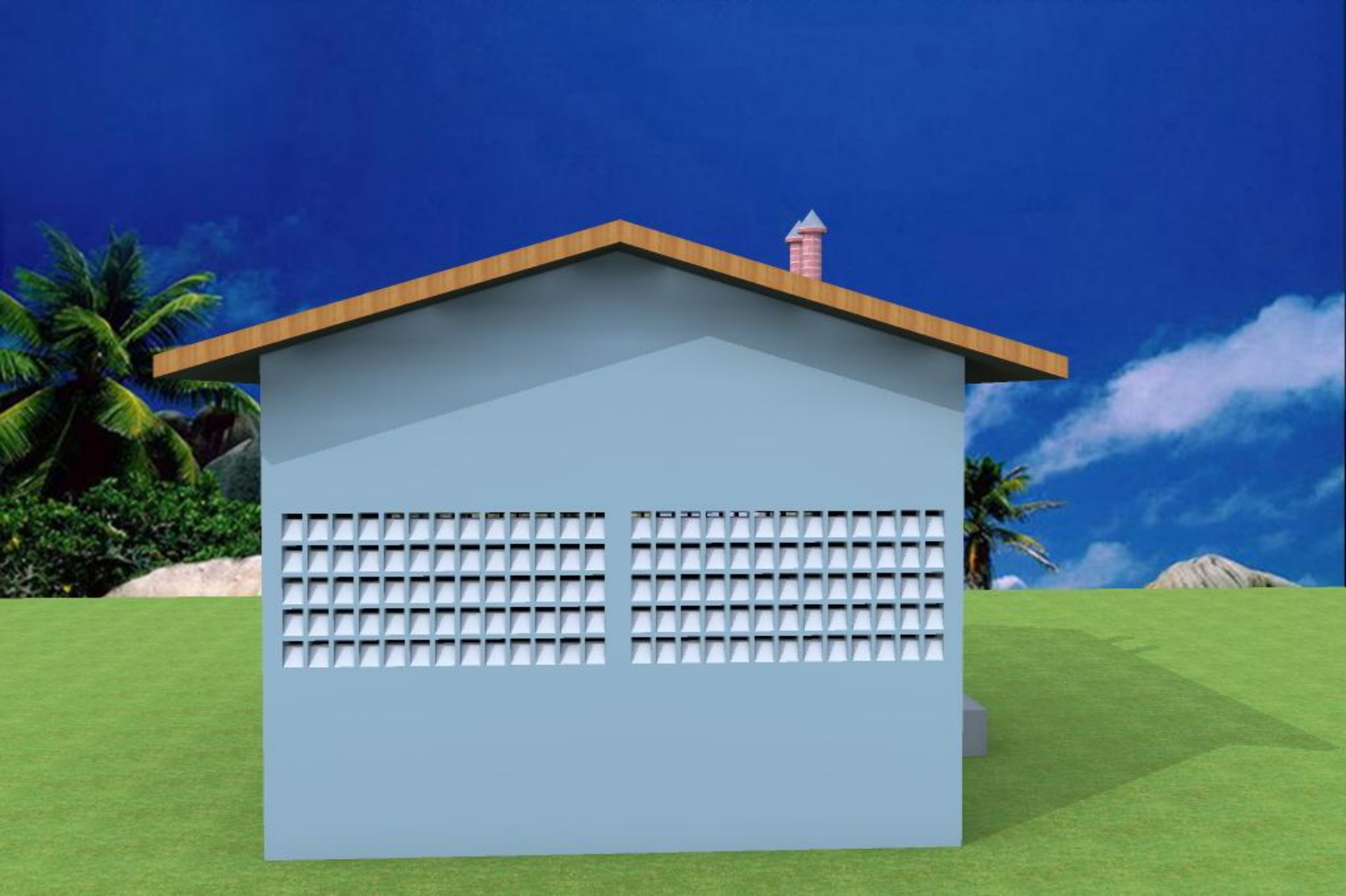


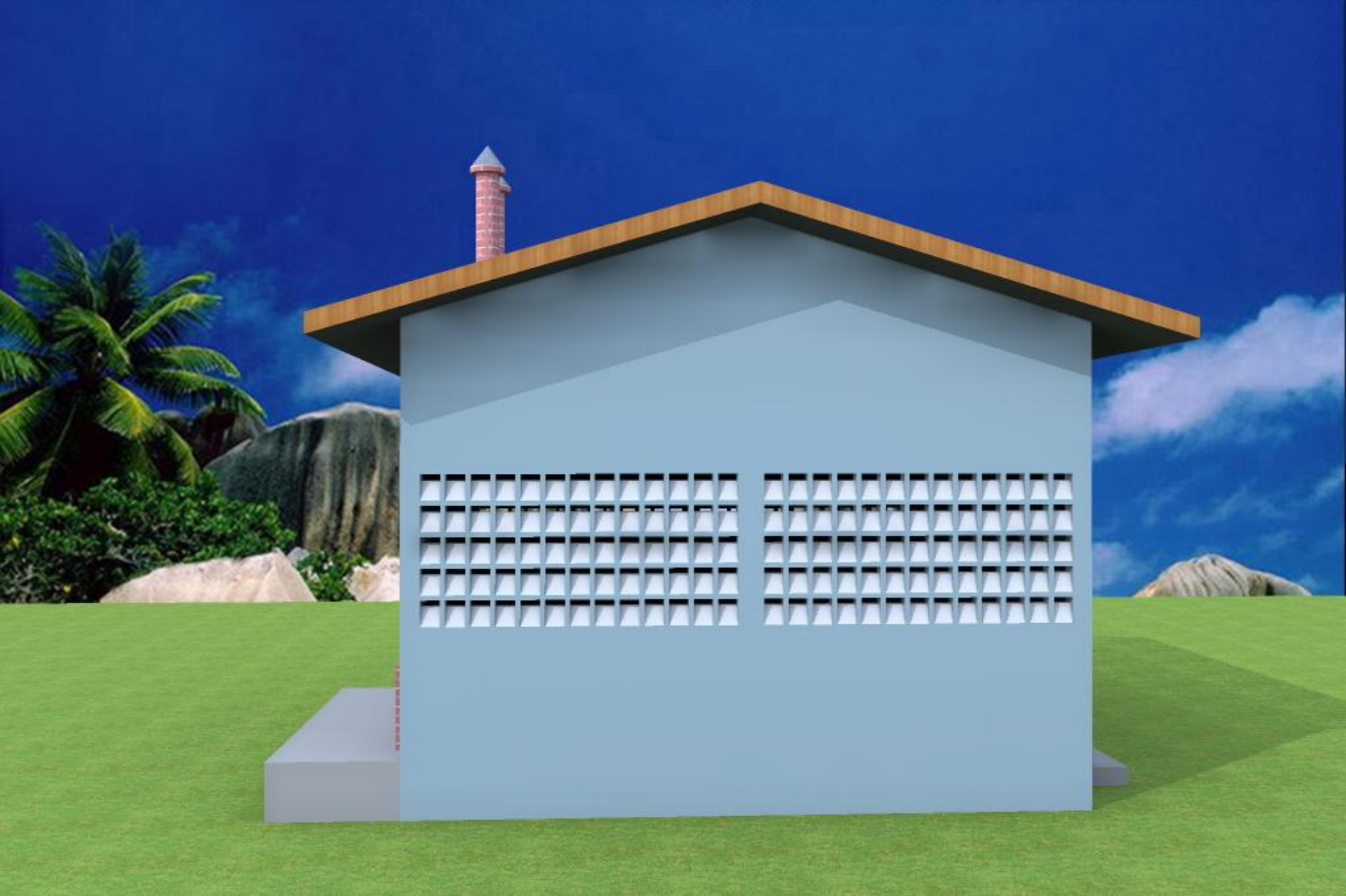


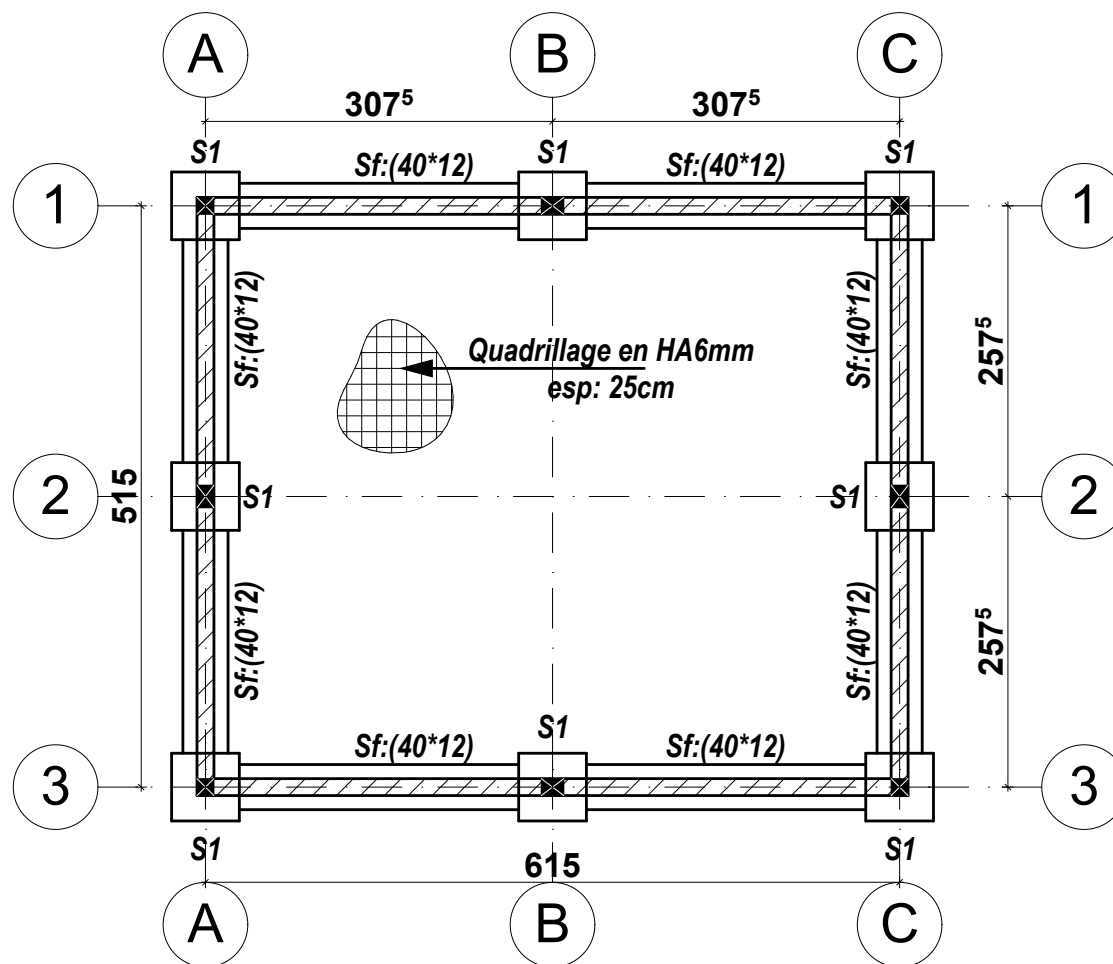
COUPE





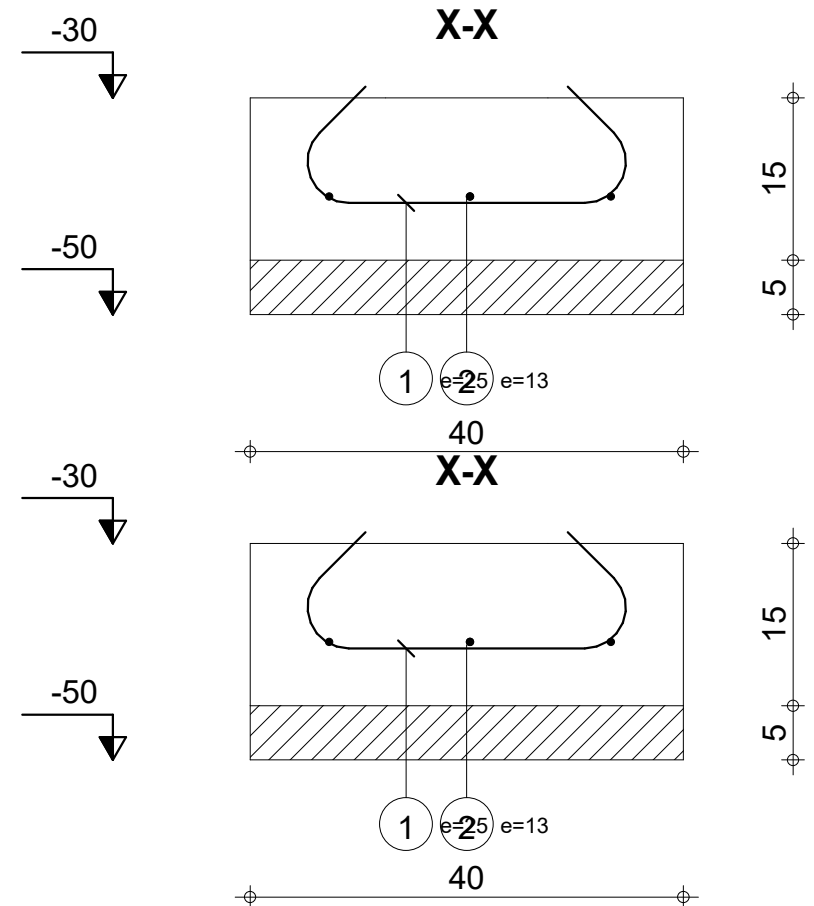






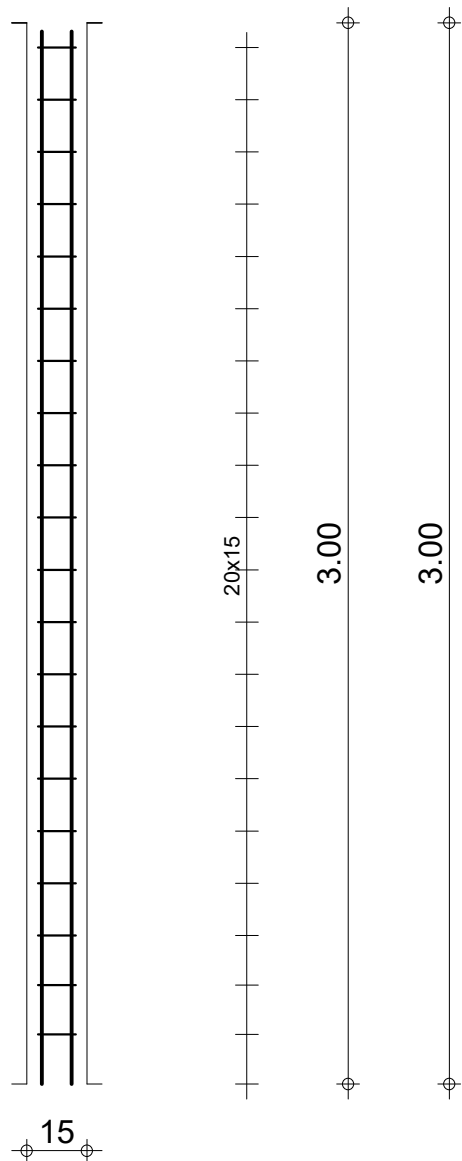
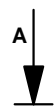
PLAN DE FONDATION



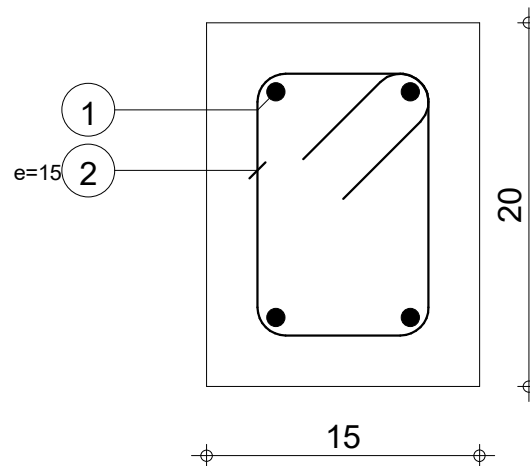


	Béton = 0.09 m3	Acier HA 400 = 1.77 kg	
	fc' = 20MPa		
Nombre 2	Surface du coffrage = 0.57 m2	Enrobage c1 = 5 cm, c2 = 5 cm	
	Densité = 19.67 kg/ m3	Echelle pour la vue 6.93cm/m Echelle pour la section 14.3cm/m	Page 1/1

Pos.	Armature	Code	Forme	Acier	Nombre
1	HA 10	l=2.98	00	HA 400	4
2	HA 6	l=62	31	HA 400	20



A-A



Tél.

Fax

Acier HA 400 = 7.34 kg

Béton : BETON20 = 0.09 m3

Acier HA 400 = 2.74 kg

Surface du coffrage = 2.1 m2

Enrobage 2.5 cm

Echelle pour la vue 5.31cm/m x 4.69cm/m

Echelle pour la section 24.1cm/m

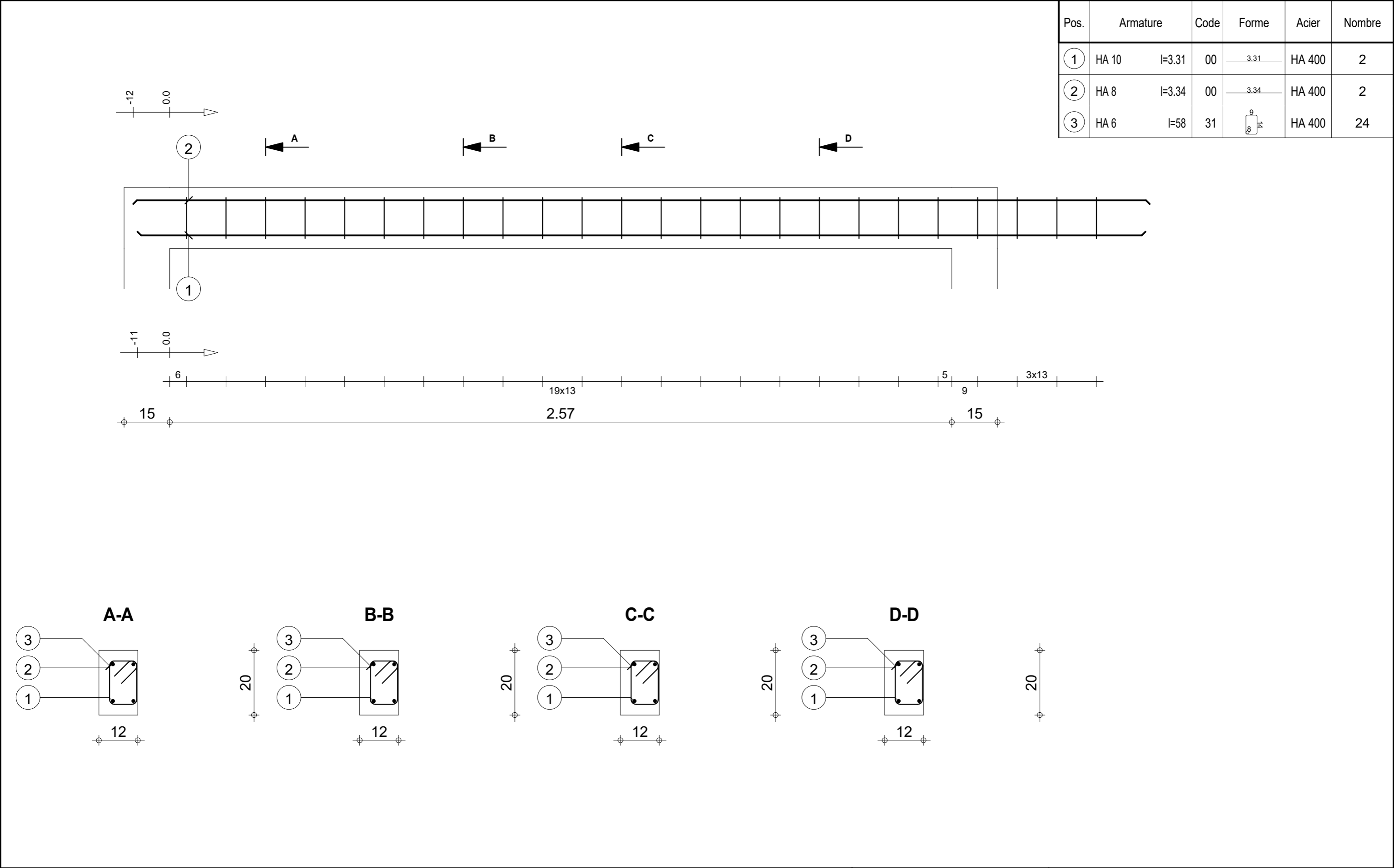
Page 1/1




CONSTRUCTION DE CUISINE

**Pr**  
**Section 15x20**





Tél.			Fax					Acier HA 400 = 6.72 kg								
Tenue au feu 1h			Fissuration peu préjudiciable			Reprise de bétonnage : Non			Béton : BETON20 = 0.0689 m3		Acier HA 400 = 3.08 kg					
	CONSTRUCTION DE CUISINE		Chainage linteau Section 12x20						Nombre 1		Surface du coffrage = 1.5 m2		Enrobage inférieur 4 cm		Enrobage supérieur 4 cm	
											Densité = 142.2 kg/ m3 Diamètre moyen = 7.47mm		Echelle pour la vue 8.87cm/m Echelle pour la section 9.44cm/m		Page 1/1	